

# NEW YORK

May 7, 2012

## ONE BROOKLYN BRIDGE

ONE BROOKLYN BRIDGE



Set along Furman Street in historic Brooklyn Heights, **One Brooklyn Bridge Park**, the borough's largest condominium conversion, is approaching a milestone, marking its status as 75 percent sold.

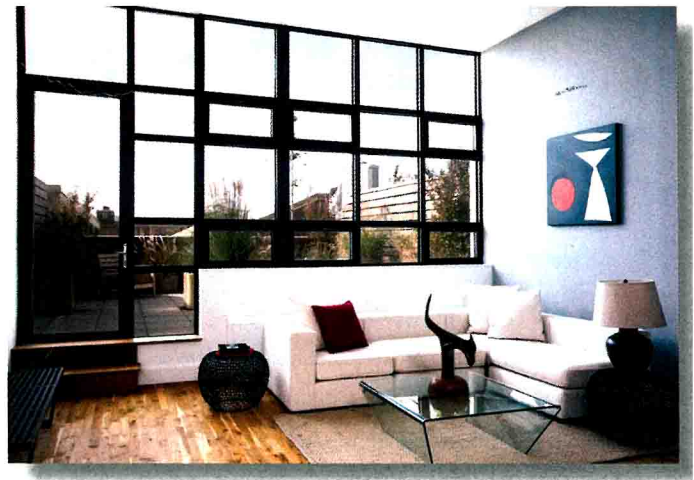
In 2010, nearly 70,000 people flocked to Brooklyn Bridge Park, the borough's first major park since 1843, for its free events and million dollar views from along a 130-foot wide promenade. The park is home to extraordinary playgrounds, including Swing Valley with its long rope swings, a water play area and a slide mountain with two-story slides. There's also a dog run, and the stunning "Jane's Carousel," designed by renowned architect Jean Nouvel. When completed, the park will span 85 acres.

Remaining loft apartments range from studios to five-bedroom condos, including penthouses and townhouses. Square footage runs from 588- to 5,000-square feet. A selection of homes come with home offices, working fireplaces and private outdoor space.

**Oak floors and ceiling heights of 13-feet are found throughout, as are oversized windows, washer/dryers and storage space. Open kitchens feature custom Dada Cucina oak-grained cabinetry and natural quartz worktops.**

Appliances are by Sub-Zero and Bosch. Terrazzo-tiled master baths are outfitted with separate glass shower stalls, freestanding soaking tubs and custom Dada grey oak double-sink vanities.

Communal amenities include 7,000-square feet of landscaped gardens, a 2,500-square foot techno gym, a fitness center, a yoga room, a dance studio, playrooms, art and music rooms, a media/lounge, a screening room, a conference room, a billiards room and a video game room. There's indoor virtual golf and an outdoor putting green, too. Services include on-site parking, valet services, round-the-clock doormen, and concierge services. Priced from \$475,000.



PENELOPE STIPANOVICH | 718-330-0030 | MNS | WWW.ONEBROOKLYN.COM